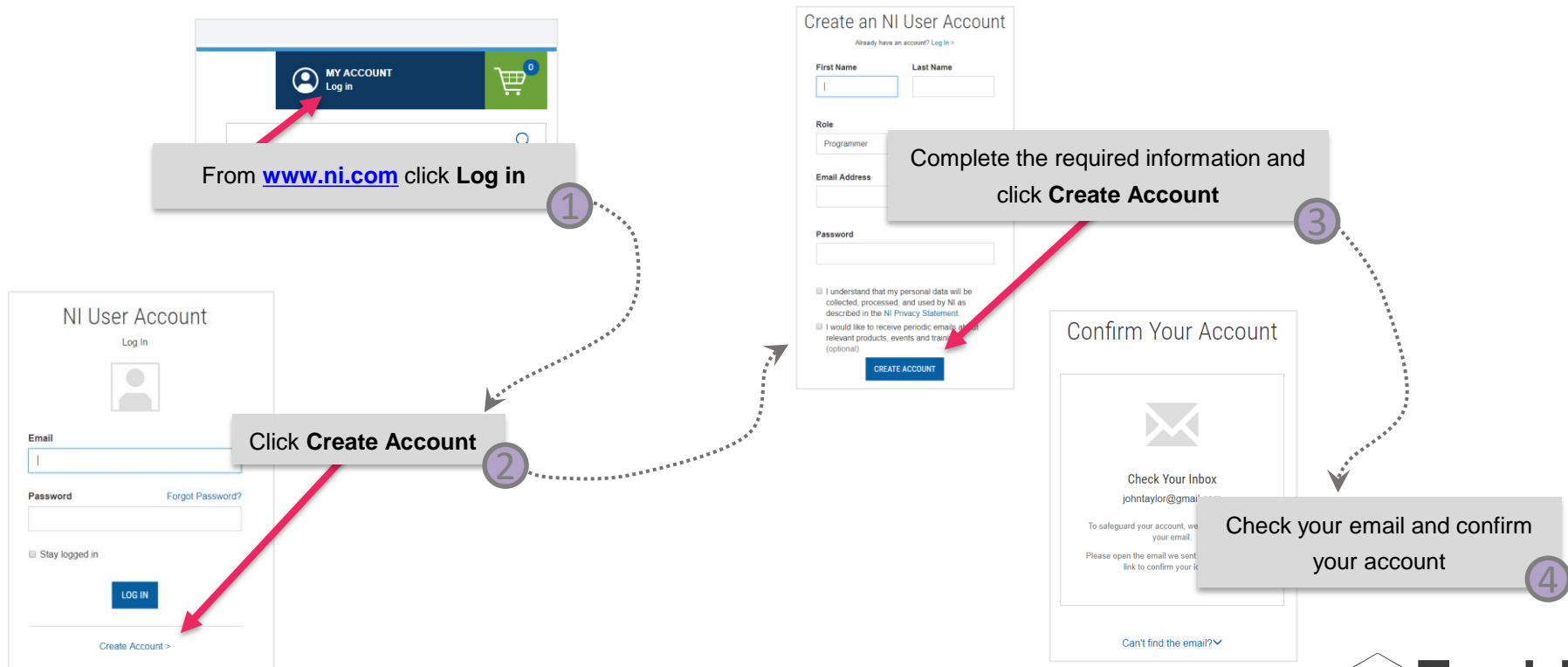
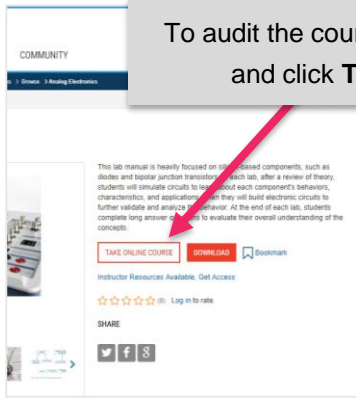


Creating a National Instruments account



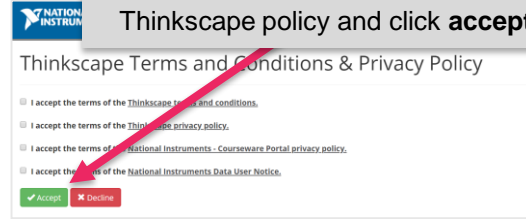
Auditing the Course

To audit the course navigate to the course and click **Take Online Course**



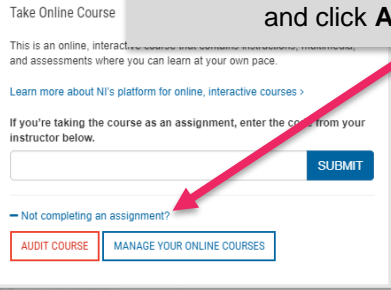
1

Read and check the box of each ThinkScape policy and click **accept**



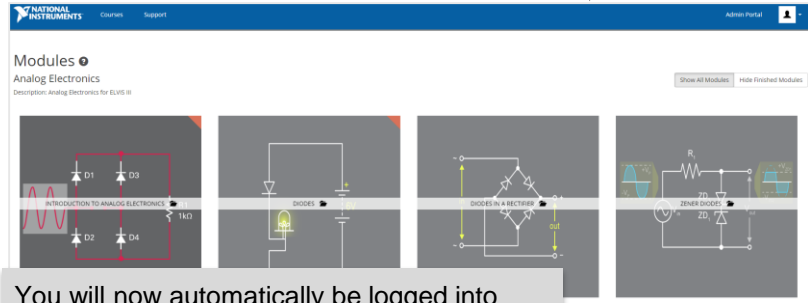
3

Expand **Not completing an assignment?** and click **Audit Course**



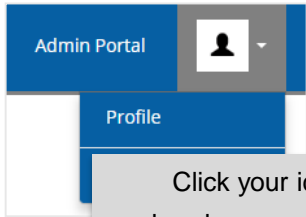
2

You will now automatically be logged into ThinkScape using the same email address as your NI profile. Please note that your password will not have been set at this time.



4

Setting your Thinkscape Password



Click your icon and in the dropdown menu select **Profile**

5

A user profile update form with the following fields: Profile Image (with a 'Choose an Image' button), First Name (Ruth), Last Name (Riddle), Username (Ruth_Test), Email (ruth.test@enableeducation.com), and Locale (English). At the bottom, there is an 'Update Profile' button and a link to 'Accepted Terms and Conditions & Privacy Policy'.

Click **Update Password**

6

A password update form with three input fields: 'Current Password', 'New Password', and 'Confirm New Password'. Below the fields is an 'Update Password' button and a link to 'Accepted Terms and Conditions & Privacy Policy'.

Complete **New Password** and **Confirm New Password** then click **Update Password**

7

Note: It is important to set your Thinkscape password at this time because if you exit without updating your password when you try to log in to the Thinkscape portal again, you will be asked to click and follow the reset password protocol.